

**NO  
HOA  
&  
NO  
CDD**



**D·R·HORTON**  
*America's Builder*

**Rosemont**

SINGLE-FAMILY HOMES  
Miami



1. Coconut Palm K-8 Academy
2. Redland Middle School
3. Homestead Senior High
4. Air Base K-8 Center
5. Fun Games Amusement Park
6. Pine Island Lake Park
7. Monkey Jungle
8. Homestead Hospital
9. Homestead Air Reserve Base
10. Homestead Miami Speedway
11. Coral Castle
12. Kevin Broils Park
13. Redland Equestrian Center
14. Blue Lagoon Farm Venue

NEIGHBORHOOD  
Map



**D·R·HORTON**<sup>®</sup>  
*America's Builder*

Rosemont

INCLUDED  
Features

### **Architectural Artistry**

- Reinforced concrete monolithic foundation slab
- Masonry exterior walls
- Professionally engineered roof with hurricane clips and bracing
- IKO® dimensional roof shingles
- Architecturally designed exterior elevations with each floor plan
- Fully sodded homesites with professionally designed landscaping
- Gutters in front area of driveway and entry walkway
- Hunter® automatic irrigation system
- Paver driveway, entry walkway, and patio
- Durable metal garage door
- Therma Tru® insulated fiberglass front door
- Exterior weather proof outlets (G.F.I.)
- Exterior hose bib connection

### **Heart of the Home**

- Knockdown textured finish on walls and ceilings
- Jeld-Wen® 2-panel interior doors
- Maxim® light fixtures
- Kwikset® keyed entry handleset
- Kwikset® interior door levers throughout
- Vinyl-coated ventilated shelving in all closets
- Daltile® 18" x 18" ceramic tile flooring in all first floor living areas (excluding bedrooms)
- Mohawk® luxurious wall-to-wall carpeting (installed over dense padding)
- Sherwin Williams® bright white interior paint

### **A Gourmet's Delight**

- Whirlpool® stainless steel appliances:
  - 24 Cu. Ft. side x side refrigerator with ice maker
  - Glass top range with microwave above
  - Built-in dishwasher
- Moen® pull out faucet
- Moen® garbage disposal
- Sterling undermount stainless steel sink
- Quality crafted custom designed cabinets with 36" uppers
- 2CM Granite countertops
- Puck lights in the kitchen

### **Thoughtful Details**

- Uponor PEX® plumbing water lines
- Minimum 50 gallon insulated water heater (per plan)
- Interior washer/dryer hook-up
- R-30 blown insulation in all attic spaces above living areas
- R-11 BATT insulation between interior wall and garage wall
- R-4.1 insulated exterior masonry walls
- Energy efficient central A/C and heating system
- Puck lights in the great room

### **Bathroom Conveniences**

- Adult-height custom designed cabinets
- Cultured marble tops
- Daltile® 12" x 12" ceramic tile walls & 18" x 18" shower floor
- Full vanity mirrors
- Frame glass shower enclosure (per plan)
- Soaking tub in bathroom one (per plan)
- Elongated commodes throughout
- Moen® bathroom faucets throughout
- Broan® exhaust fans

### **Technology Standard Features**

- Square D® surge protection on all major appliances
- Pre-wired for ceiling fans with switches in all bedrooms and great room
- High speed structured wiring for 4-line phone, video and computer Includes CAT-5 data lines and RG-6 quad shield coaxial cable (per plan)
- BRK® electrical smoke detectors with battery back-up
- BRK® carbon monoxide detector
- Deako® switches
- Square D® electrical panel with circuit breakers

### **Home Is® Connected**

- Qolysys IQ Panel II 7" HD Touchscreen with built-in 5MP camera
- ADC 750 WiFi video doorbell
- Echo Pop with Alexa
- Z Wave™ Thermostat
- Z Wave™ Light Switch
- Z Wave™ Door Lock
- WiFi enabled garage door opener with two transmitters
- Security System w/ one motion detector and three door contacts

### **D.R. Horton's Personal Touch**

- Personalized New Homeowner Orientation
- D.R. Horton 1-Year Warranty
- 10-Year RWC™ warranty to protect your investment
- 10-Year Carrier® limited warranty
- 3rd party home inspections





**D·R·HORTON**<sup>®</sup>  
*America's Builder*

**Rosemont**

FLOORPLANS



Classic



Coastal

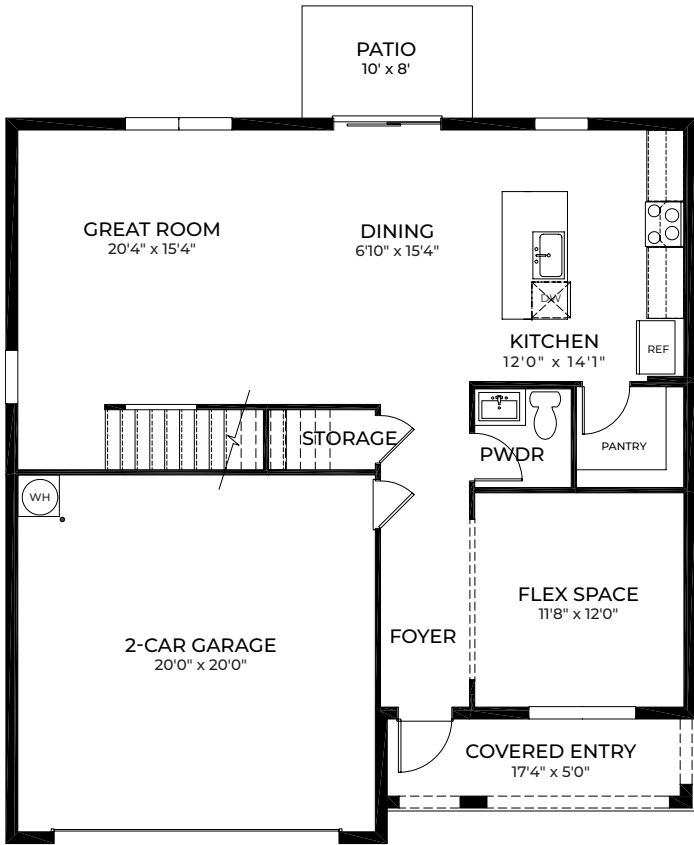
GALEN



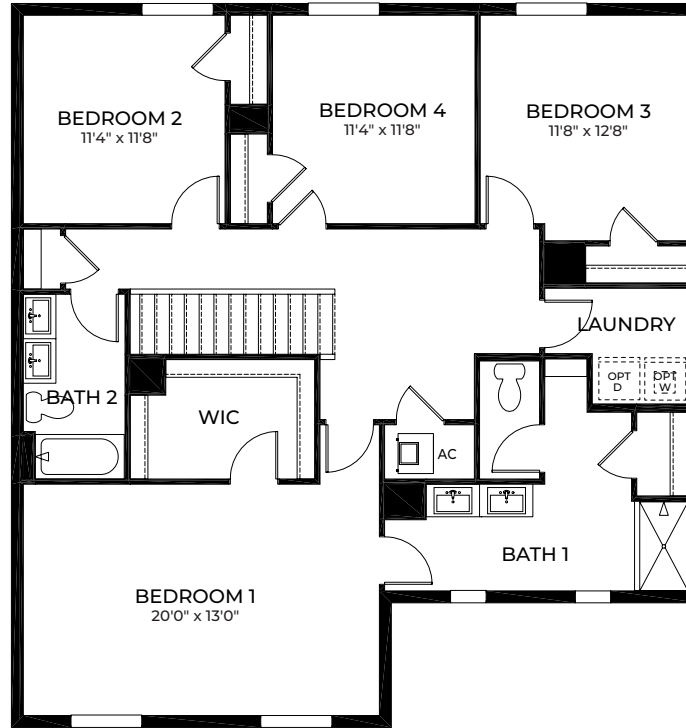
Contemporary



Modern



FIRST FLOOR



SECOND FLOOR



# GALEN

- 4 Bedrooms
- 2.5 Bathrooms
- Flex Space
- 2-Car Garage

1st Floor A/C Sq. Ft.	1,019
2nd Floor A/C Sq. Ft.	1,451
<b>Total A/C Sq. Ft.</b>	<b>2,470</b>
Porch	87
2-Car Garage	432
<b>Total Sq. Ft.</b>	<b>2,989</b>





Classic



Coastal

HAYDEN

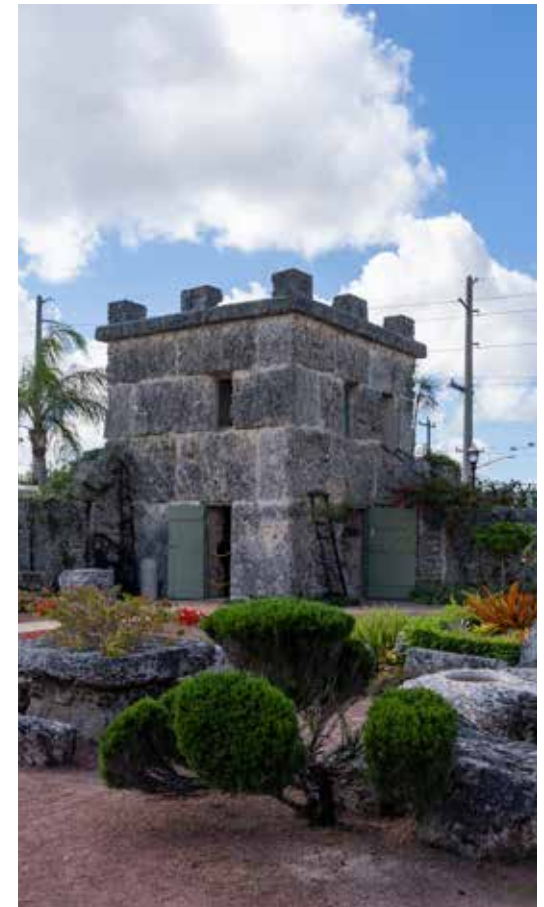
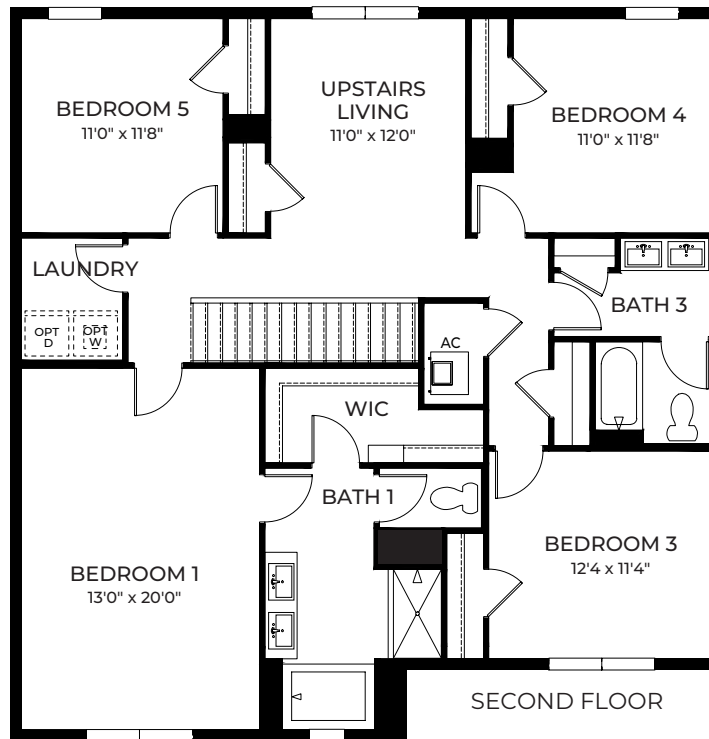
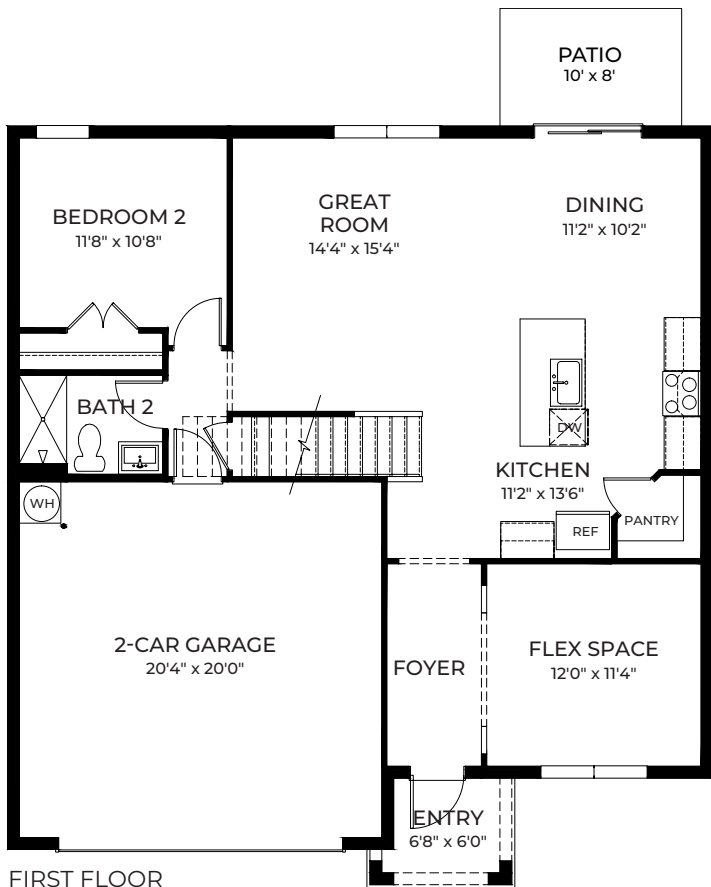


Contemporary



Modern





# HAYDEN

5 Bedrooms  
 3 Bathrooms  
 Flex Space, Upstairs Living  
 2-Car Garage

1st Floor A/C Sq. Ft.	1,104
2nd Floor A/C Sq. Ft.	1,541
<b>Total A/C Sq. Ft.</b>	<b>2,645</b>
Porch	45
2-Car Garage	437
<b>Total Sq. Ft.</b>	<b>3,127</b>





Classic



Coastal

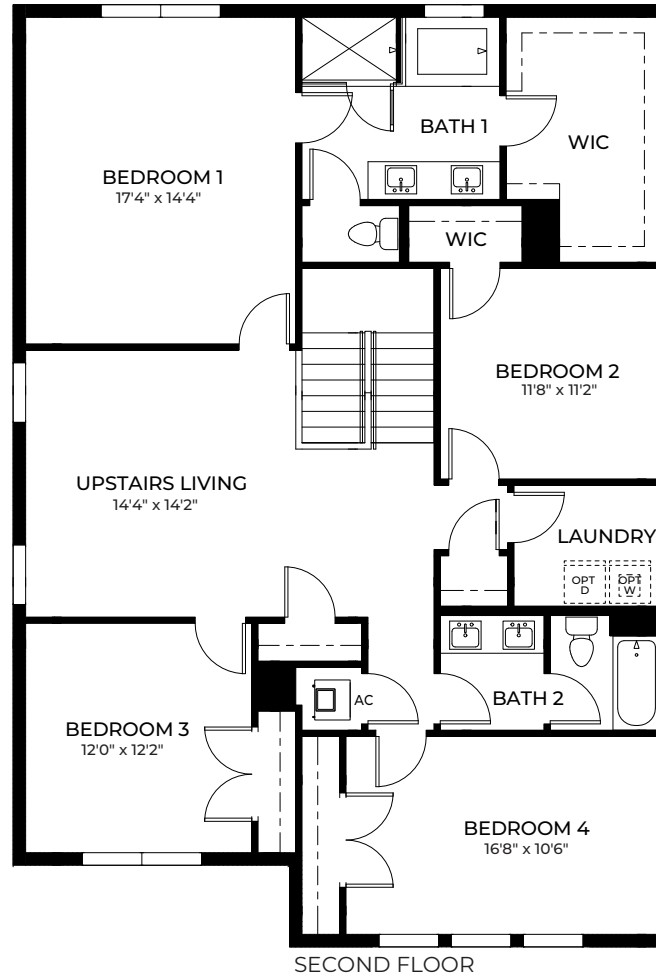
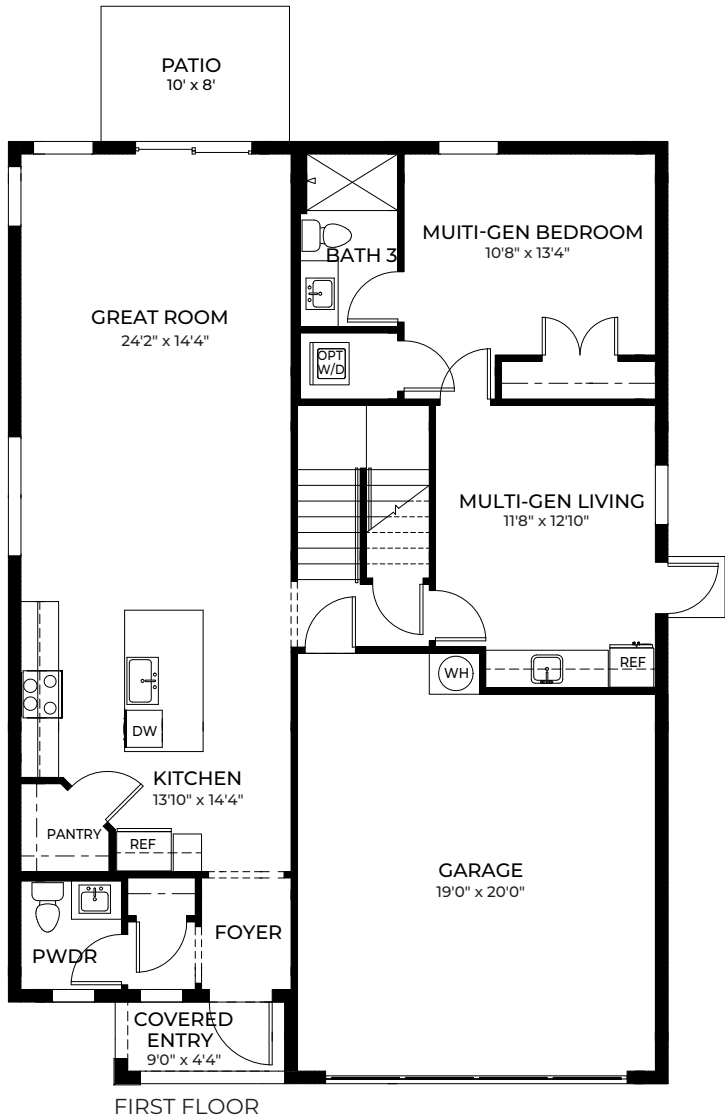
GRANDCOURT



Contemporary



Modern



# GRANDCOURT

5 Bedrooms  
3.5 Bathrooms  
Upstairs Living  
2-Car Garage

1st Floor A/C Sq. Ft.	1,256
2nd Floor A/C Sq. Ft.	1,622
<b>Total A/C Sq. Ft.</b>	<b>2,878</b>
Covered Entry	39
2-Car Garage	430
<b>Total Sq. Ft.</b>	<b>3,347</b>



# COMMUNITY Siteplan

Rosemont  
12921 SW 265th Terrace, Miami, FL 33032



D.R. Horton is equal housing opportunity builder. Home and community information, including pricing, included features, terms, availability and amenities, are subject to change and prior sale at any time without notice or obligation. Pictures, photographs, features, colors, drawings, floor plans, square footages and sizes are approximate for illustration purposes only and will vary from the homes as built. All drawings are the artist's concept. Buyer should conduct his or her own investigation of the present and future availability of school districts and school assignments. D.R. Horton has no control or responsibility for any changes to school districts or school assignments should they occur in the future. Home Is Connected, A smart home is a convenient home setup where appliances and devices can be automatically controlled remotely from any internet-connected place using a mobile or other networked device. Certified General Contractor License Number CGC05939

